



[www.alanko.com.tr](http://www.alanko.com.tr)



# Bird & Wildlife Scare Propane Cannon

## **MS6**

Assembly and Operating Instructions  
User's Manual  
Model: MS 6





# CONTENT

3

Technical Specification

4

The functions of Bird Scare Propane Cannons  
Areas of Usage  
Security Recommendations

5

Instructions for Safe Usage! WARNING

6

Included In Your Package

7

Cannon Assembly

8-9

Spare part list  
Frame, Gasvalve, Mechanisme, Gasregulator

10

MS6 Troubleshooting

11

Terms of Guarantee

12

Warranty Certificate

## Technical Specification

**Sound Pressure Level :** 110 – 120 dB(A) FAST  
(Measured perpendicular to end of the megaphone at 1 meter distance).

**Power Supply:** Propane and pressure of gas cylinder

**Gas Consumption:** 10 Kg propane gas is enough for approximately 14000-17000 detonations.

**Maximum wind load :** 7-30 m/s

**Detonation intervals :** Minimum 30 Second – Maximum 40 Minutes.

**Positioning :** Horizontal.

**Weight :** 8,20 Kg.

**Dimensions :** 35 x 92 x 40 Cm (WLH) Installed Device Dimensions

**Box Dimensions :** 16 x 61 x 27 Cm (WLH)

**Place of Origin :** TURKIYE

*Thank you for choosing us...*



## **The functions of Bird Scare Propane Cannons**

MS6 Propane cannon is powered by readily available, economical propane gas. It produces an average amount of 117-125 decibel blast without giving any harm to the nature and all living creatures, and protects large agricultural areas / farmlands against undesirable birds and wild animals. The mechanism does not need any power supply, it works with gas pressure and sparks by magneto. Product is not include Gas Cylinder. Propane gas is supplied by the user and connects the device to the tube with the gas pressure regulator according to European standards.

## **Areas of Usage**

- Sunflower and corn fields against birds
- Orchards and vegetable gardens against birds, warthogs and wildlife.
- Poultry farms, fish farms and other breeding farms against birds and other wild animals.
- Feed plants and granaries against birds.
- Bee hives against endamaging bears.
- To remove birds at Airports.

## **Security Reccomendations**

Read all operating directions and security information on the usage manual in detail before using the Device for avoiding injury and taking the best performance from the product. Keep the user's manual to make reference to the assembly and operating instructions and the security recommendations. For reasons of safety, anyone not familiar with this user's manual may not operate the Scarecrow Propane Cannon. If you still have questions about operating the device, please contact your local dealer, who will be happy to assist you.

## **Instructions for Safe Usage!** **WARNING**

- 1.** Wear ear protection while operating the device (sound pressure level is approx. 120 dB(A) fast when measured perpendicular to the end of the megaphone at 1 meter's distance)
- 2.** Do not use in neighborhoods or streets or crowd.
- 3.** Keep the device away from inflammable material (e.g crops) as a precaution against fire caused by the detonation flame. Put your device on a platform of sheet iron or concrete which at least 40 cm width and 60 cm length and surely clean 1 square meter field.
- 4.** If you are not able to put your device on a platform, put your machine in a center of a field purified from grass and dried grass.
- 5.** During the use and adjustment stand at the back of the barrel. Never look into its megaphone.
- 6.** While the device is operate do not approach to front of the barrel.
- 7.** Do not make your machine work on the shape of looking its barrel to sets such as Wall, door etc. Sound waves will return. Your ear can be injured without aware of.
- 8.** Never use the device indoors or in a closed space.
- 9.** Do not hang the machine on a tree.
- 10.** Do not cover the device with cloth that touch to the device.
- 11.** Be sure the existing of the gasket in the adjustment valve and it should not be worn out. Change it if it is worn out.
- 12.** Be sure that fine adjustment valve is screwed completely to tube.
- 13.** Give your device to third person only with user guide and instruction for safe usage.
- 14.** Do not smoke near the device.
- 15.** Never place subject in the megaphone.
- 16.** Keep the gas cylinder away from sources of heat.
- 17.** The gas cylinder should be place upright.

**18.** Only propane or butane gas may be used, and preferably propane. No other types of gas are allowed.

**19.** Replace the gas hose every two years with genuine ALANKO gas hose. Other hoses are not permitted.

**20.** Always consult the latest version of the manual at [www.alanko.com.tr](http://www.alanko.com.tr)

The device has certain components which can only be repaired or set by the ALANKO technical service department or by a recognized dealer.

## Included In Your Package



**-Not Included gas cylinder.**

## Cannon Assembly

- Remove cannon from packaging and place on a flat, stable surface.
- Assemble the right (MS6108R), left (MS6107L) and back base stand (MS6109) to the device using screws supplied.
- After assembling the all base stands, the device should stand at a specific angle and cannon should be well placed on a flat.
- Loosen the clamping bolt (MS6102) from the inner megaphone. Adjust the telescopic megaphone (MS6105) to the desired length and secure it with the clamping bolt. To ensure that the clamping bolt is correctly positioned above fixing hole.
- Connect the gas regulator to any standard propane (LP) tank. Make sure the connection is secure and clean. Also check that the regulator unit has sealing ring and that the ring is clean before connect.
- Wear ear protection and open the valve of the gas cylinder and interval regulator completely by turning them counter-clockwise.
- When the interval regulator is entirely open (+) the device will operate at intervals 35 to 60 seconds. For longer intervals, close the interval regulator smoothly (-) until you reach the desired time.
- The only way to stop or start up device is to close or open the gas cylinder valve.
- The sound pressure of the first couple blast may be lower than desired, but the device will work properly thereafter.



## Spare Part List

### Frame

<b>MS6101</b>	Outer Megaphone
<b>MS6102</b>	Clamping Bolt
<b>MS6103</b>	Rear Cover
<b>MS6104</b>	Inner Cover
<b>MS6105</b>	Inner megaphone
<b>MS6106</b>	Handle
<b>MS6107L</b>	Left Base Frame
<b>MS6108R</b>	Right Base Frame
<b>MS6109</b>	Back Base Frame
<b>MS6110</b>	Base Connection Plate
<b>M6X10</b>	M6 X 10 DIN933 Bolt.
<b>M6X15</b>	M6 X 15 DIN933 Bolt.
<b>M6X15CS</b>	M6X15 Countersunk Screw
<b>M6</b>	M6 Hexagonal Nut

### Gasvalve

<b>MS6301S</b>	Gasvalf Complete Set
<b>MS6302</b>	Gas Jet
<b>MS6303</b>	Gasvalve Spring
<b>MS6304</b>	Shaft
<b>MS6305</b>	Holder
<b>O-ring1</b>	4,47x448
<b>O-ring2</b>	3,17x2,62

### Mechanism

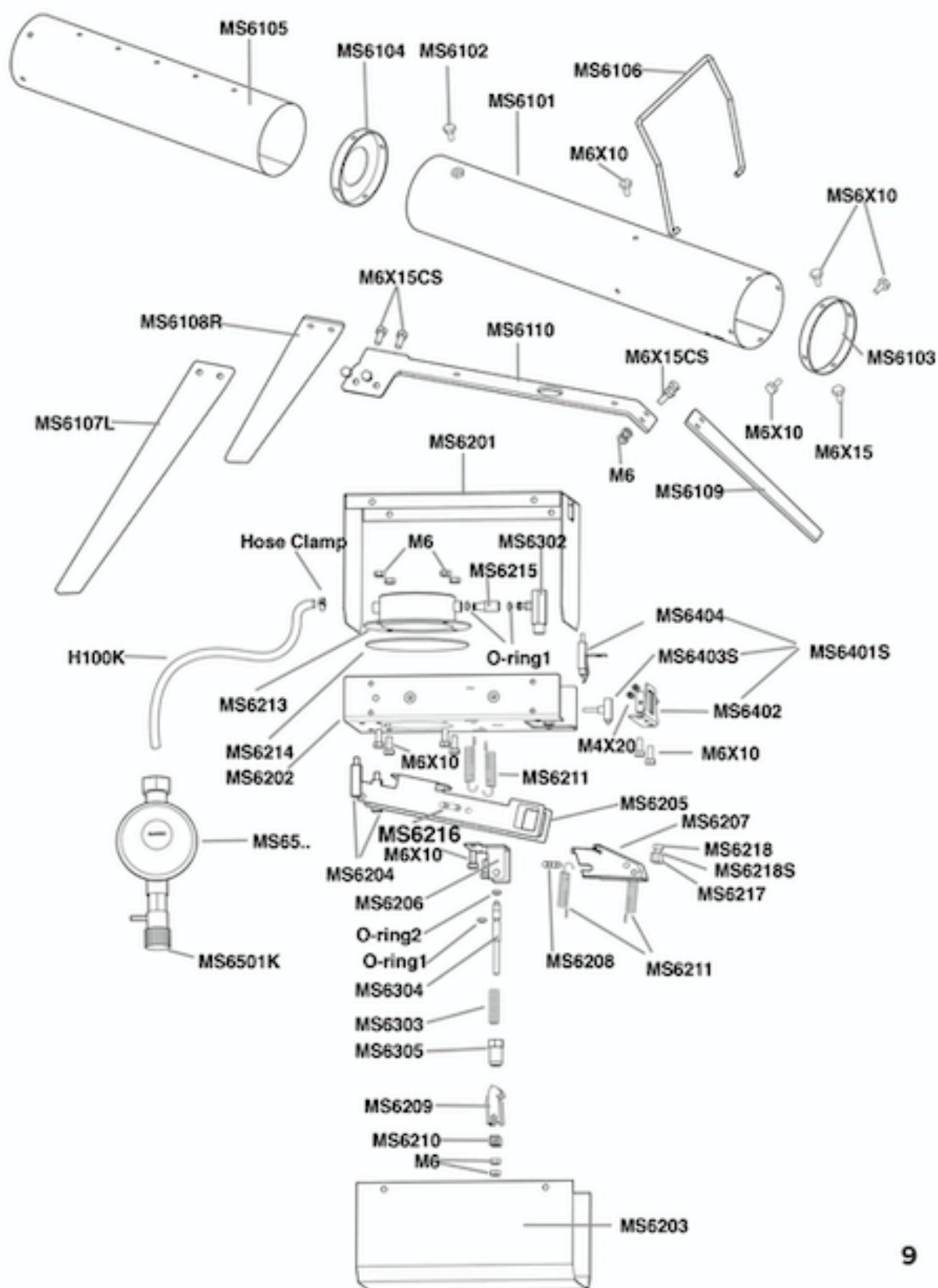
<b>MS6201</b>	Mechanizm Connection Plate
<b>MS6202</b>	Main Body
<b>MS6203</b>	Cover
<b>MS6204</b>	Joint Pin
<b>MS6205</b>	Hammer Lever
<b>MS6206</b>	Hammer Holder
<b>MS6207</b>	Hammer
<b>MS6208</b>	Pull -Spring Hummer Pin
<b>MS6209</b>	Hinged Gasvalve Switch
<b>MS6210</b>	Hinged Block
<b>MS6211</b>	Spring
<b>MS6213</b>	Gas Tank
<b>MS6214</b>	Diaphragm
<b>MS6215</b>	Connection Piece for Gas Valve
<b>MS6216</b>	Pull Spring Lever Pin
<b>MS6217</b>	Firing Pin Housing
<b>MS6218</b>	Firing Pin
<b>MS6218S</b>	Firing Pin Spring
<b>M610</b>	M6 X 10 DIN933 Bolt.
<b>O-ring1</b>	O-ring 4,47x448

### Gas regulator

<b>MS6501</b>	Gas Regulator Valve
<b>MS6501K</b>	Gas Reg. Plastic Cover
<b>MS6502</b>	Gas Regulator for Europe
<b>MS6503</b>	Gas Regulator for America
<b>MS6504</b>	Gas Regulator for India
<b>H100K</b>	100 CM Propane Hose



## Spare Part List



## MS6 Troubleshooting

Problem	Cause	Remedy
MS6 Fully connected, fails to operate at all	<p>The valve of the LP gas tank is not open.</p> <p>The LP Gas Tank is empty.</p>	<p>Open the the valve. Open it by turning into (+) mark direction; if the blast are too fruquent, turn it a little to the (-) mark.</p> <p>Replace fuel.</p>
Leaks.	<p>The gas regulatör valve (MS6501) is not tight enough.</p> <p>The gas regulatör gasket may be crushed or drop while tight to LP Gas Cylinder.</p> <p>The Hose(H100K) of MS6 has been damaged.</p> <p>Diaphragm leaks along the plate rim.</p>	<p>Tighten the coupling nut with wrench.</p> <p>Replace new one.</p> <p>Renew the höse.</p> <p>Check it with a leakage sprej or suds.</p> <p>Repair should be carried out by the dealer.</p>
MS6 operates, but there is no explosion.	<p>Ignition gives a weak spark or no spark at all.</p> <p>The Wind is too strong</p> <p>Gas Mixture is not good.</p>	<p>Filing needle and opposite end of spark plug. (MS6404) The distance between the two ends should ne 3-4 mm. If you cannot replace set (MS6403S) Spurk plug and Piezzo are wet. Dry both well.</p> <p>Place the MS6 out of wind or behind a screen.</p> <p>Gas mixture in the gas tank is not good, replace LP Gas tank. Prefably use propane gas.</p>
<p>MS6 works, but gives a dull explosion.</p> <p><b>10</b></p>	<p>Wind is too strong and gas/air mixture is disturbed.</p> <p>Inner megaphone not or partially pulled out (MS6105)</p>	<p>Gas mixture in the gas tank is not good, replace LP Gas tank. Prefably use propane gas.</p> <p>Pull out the full extention (MS6105)</p>

## Terms of Guarantee

- 1.** Guarantee period starts at the date of original purchase and ALANKO warrants this product for 1 year.
- 2.** All parts of the MS6 propane bird scarer cannon are under the guarantee against manufacturing defects and faulty workmanship. (All parts of the propane bird scarer cannon are warranted during the applicable warranty period under the terms of the owner's manual from any defects in workmanship and material.)
- 3.** In the event of any contradiction between the terms and conditions of use, the product is withhold all warranty service.
- 4.** This limited warranty is applicable only if the Warranty Certificate (Warranty Card) is fully filled and presented with the defective product.
- 5.** In order to determine the technical methods to be applied for the elimination of the failure and to determine the parts to be replaced, it is necessary to contact the relevant supplier along with the photograph of the label showing the Production Date & Serial Number, the photo describing the product failure and the video describing the product failure. Complaints filed without pictures, videos and tags cannot be resolved and will not be considered.
- 6.** The product or parts that need to be replaced will be shipped to the distribütör from which the purchase was made with the next shipment. In case of end-user grievance, the distribütör is obliged to provide the necessary spare parts support to the end-user during the warranty period.
- 7.** Our firm cannot be held responsible for defects due to wrong delivery or stocking.
- 8.** Our firm cannot be held responsible for any accident or injuries occurred when the device is on.
- 9.** During the applicable warranty period, our firm is responsible for warranty service or repairs. Our firm excludes coverage for damage resulting from unauthorised service or unauthorised modifications.
- 10.** The diagnosis and repair of defect covered by manufacturer's warranty is made by service staff. Defect parts may be repaired or replaced. Repair of defect parts/ devices may be obtained in our manufacturing plant or in the location of defect.
- 11.** For repair and service, shipping cost (ground only) is not covered under warranty unless reached an agreement with our firm.

## WARRANTY CERTIFICATE

### Manufacturer's

Name :

Address :

Phone / Fax :

E-mail :

### Product's

Model Name : MS6

Brand Name : ALANKO

Max. repairing time : 4 Weeks

Warranty : 1 Year

Serial Number :

### Vendor information

Name :

Address :

Phone / Fax :

Date of Purchase :

Date / Stamp :

### Client's

Name :

Phone :

E-mail :

Address :